

Specifications

Models	Z-34/22 DC		Z-34/22 Bi-Energy	
Measurements	US	Metric	US	Metric
Working height maximum*	40 ft 6 in	12.52 m	40 ft 6 in	12.52 m
Platform height maximum	34 ft 6 in	10.52 m	34 ft 6 in	10.52 m
Horizontal reach maximum	22 ft 3 in	6.78 m	22 ft 3 in	6.78 m
Up and over clearance maximum	15 ft	4.57 m	15 ft	4.57 m
A Platform length	2 ft 6 in	0.76 m	2 ft 6 in	0.76 m
B Platform width	4 ft 8 in	1.42 m	4 ft 8 in	1.42 m
C Height - stowed	6 ft 7 in	2.00 m	6 ft 7 in	2.00 m
D Length - stowed	18 ft 6 in	5.64 m	18 ft 6 in	5.64 m
E Storage height	7 ft 5 in	2.26 m	7 ft 5 in	2.26 m
A Storage length	13 ft 5 in	4.08 m	13 ft 5 in	4.08 m
A Width	5 ft 8 in	1.73 m	5 ft 8 in	1.73 m
A Wheelbase	6 ft 2 in	1.88 m	6 ft 2 in	1.88 m
A Ground clearance - center	6 in	0.15 m	6 in	0.15 m

Productivity

Lift capacity	500 lb	227 kg	500 lb	227 kg
Platform rotation	180°		180°	
Vertical jib rotation	139°		139°	
Turntable rotation	355° non-continuous		355° non-continuous	
Turntable tailswing	zero		zero	
Drive speed - stowed	4.0 mph	6.4 km/h	4.0 mph	6.4 km/h
Drive speed - raised**	.68 mph	1.1 km/h	.68 mph	1.1 km/h
Gradeability - stowed***	30%		30%	
Turning radius - inside	5 ft 9 in	1.75 m	5 ft 9 in	1.75 m
Turning radius - outside	13 ft 1 in	4 m	13 ft 1 in	4 m
Controls	24V DC proportional / 2 speed		24V DC proportional / 2 speed	
Tires - air filled	9 x 14.5 in		9 x 14.5 in	

Power

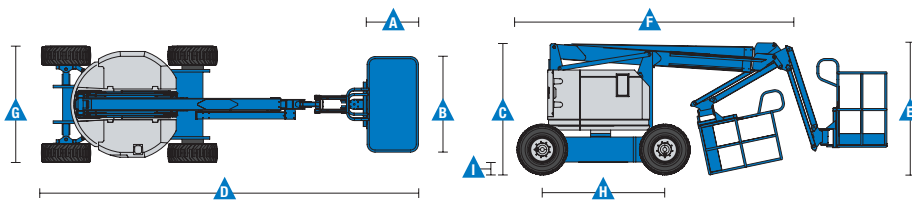
Power Source	48V DC (eight 6 V batteries 315 Ah capacity)	48V DC (eight 6 V batteries 315 Ah capacity) with 13.3hp (9.9kW) Kubota T4f Z482 diesel driven alternator
Auxiliary Power Unit	24V DC	24V DC
Hydraulic Tank Capacity	4 gal	15.1 L
Fuel Tank Capacity	—	9.0 gal / 35.2 L

Weight****

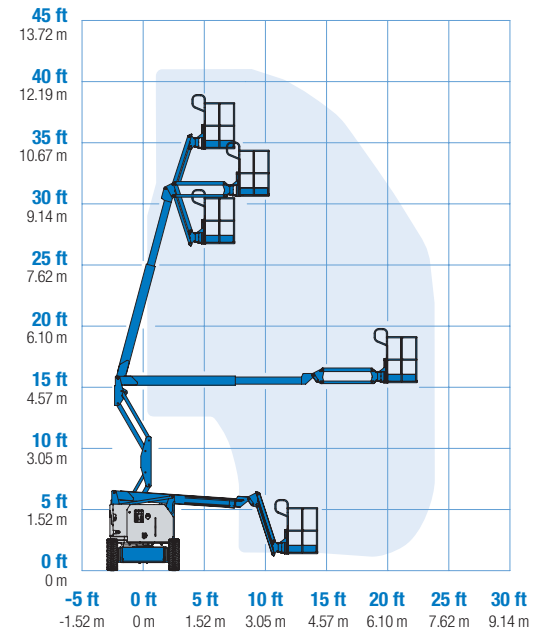
11,000 lb	4,990 kg	12,000 lb	5,443 kg
-----------	----------	-----------	----------

Standards Compliance

ANSI A92.5, CSA B354.4, EN 280, AS 1418.10



Range Of Motion Z-34/22 DC/Bi



* The metric equivalent of working height adds 2 m to platform height. U.S. adds 6 ft to platform height.
 ** In lift mode *(platform raised), the machine is designed to operate on firm, level surfaces only.
 *** Gradeability applies to driving on slopes. See operator's manual for details regarding slope ratings.
 **** Weight will vary depending on options and/or country standards.

Features

Standard Features

Measurements

- 40 ft 6 in (12.52 m) working height
- 22 ft 3 in (6.78 m) horizontal reach
- 15 ft (4.57 m) up and over clearance
- Up to 500 lb (227 kg) lift capacity

Productivity

- 4 ft (1.22 m) jib boom with 139° working range
- Self-leveling platform
- Hydraulic platform rotation
- Proportional joystick controls
- Thumb rocker steer
- Drive enable
- AC power to platform
- Alarm package: flashing beacon and travel alarm
- Horn
- Hour meter
- Tilt alarm
- Descent alarm
- Zero tailswing
- 355° non-continuous turntable rotation
- Locking turntable covers (Bi-Energy only)
- Lift Guard™ Contact Alarm
- Dual parallelogram for vertical wall tracking

Power

- 48V deep cycle battery pack
- 24V DC auxiliary power
- 13.3hp (9.9kW) Kubota T4f Z482 diesel driven alternator. (Bi-energy model only)
- Battery charge indicator (BCI) (Standard on BE)
- Universal 30A battery smart charger

Easily Configured To Meet Your Needs

Platform Options

- Steel 4 ft 8 in (1.42 m) with sliding mid-rail (standard)
- Steel 3 ft 10 in (1.17 m) with sliding mid-rail

Jib

- 4 ft (1.22 m) jib boom

Power

- 48V DC power source

Drive

- 2WD

Tire Options

- Industrial air-filled (standard ANSI/CSA)
- Industrial foam-filled (standard CE/AUS)
- Industrial non-marking air-filled
- Industrial non-marking foam-filled
- Sealant treated air-filled



Options & Accessories

Productivity Options

- Platform swing gate
- Lift Guard Platform Mesh - Half
- Lift Guard Platform Mesh - Full
- Platform top auxiliary rail***
- Air line to platform
- Specialty hydraulic oil (Cold weather, fire resistant or biodegradable)
- Aircraft protection package**
- Hostile environment kit
- Light package
- Lockable platform control box cover (Bi-Energy Only)
- Florescent tube caddy****
- Pipe cradle (pair)****

Power Options

- AGM batteries
- EE UL583 Fire Protection rating (DC models only)
- Battery charge indicator (BCI)*
- Low voltage interrupt with BCI
- Cold Weather Package (Bi-Energy only)
- 800 watt 120 V AC power inverter (DC only)

* Standard on Bi-Energy only.
 ** Derates load capacity to 440lb. Not available with other platform options.
 *** Not available with swing gate or 1/2 height mesh
 **** Available through aftermarket parts only

Genie United States

6464 185th Ave. NE
 Redmond, WA 98052
 Telephone +1 (425) 881-1800
 Toll Free in USA/Canada +1 (800)-536-1800
 Fax +1 (425) 883-3475

Distributed By: